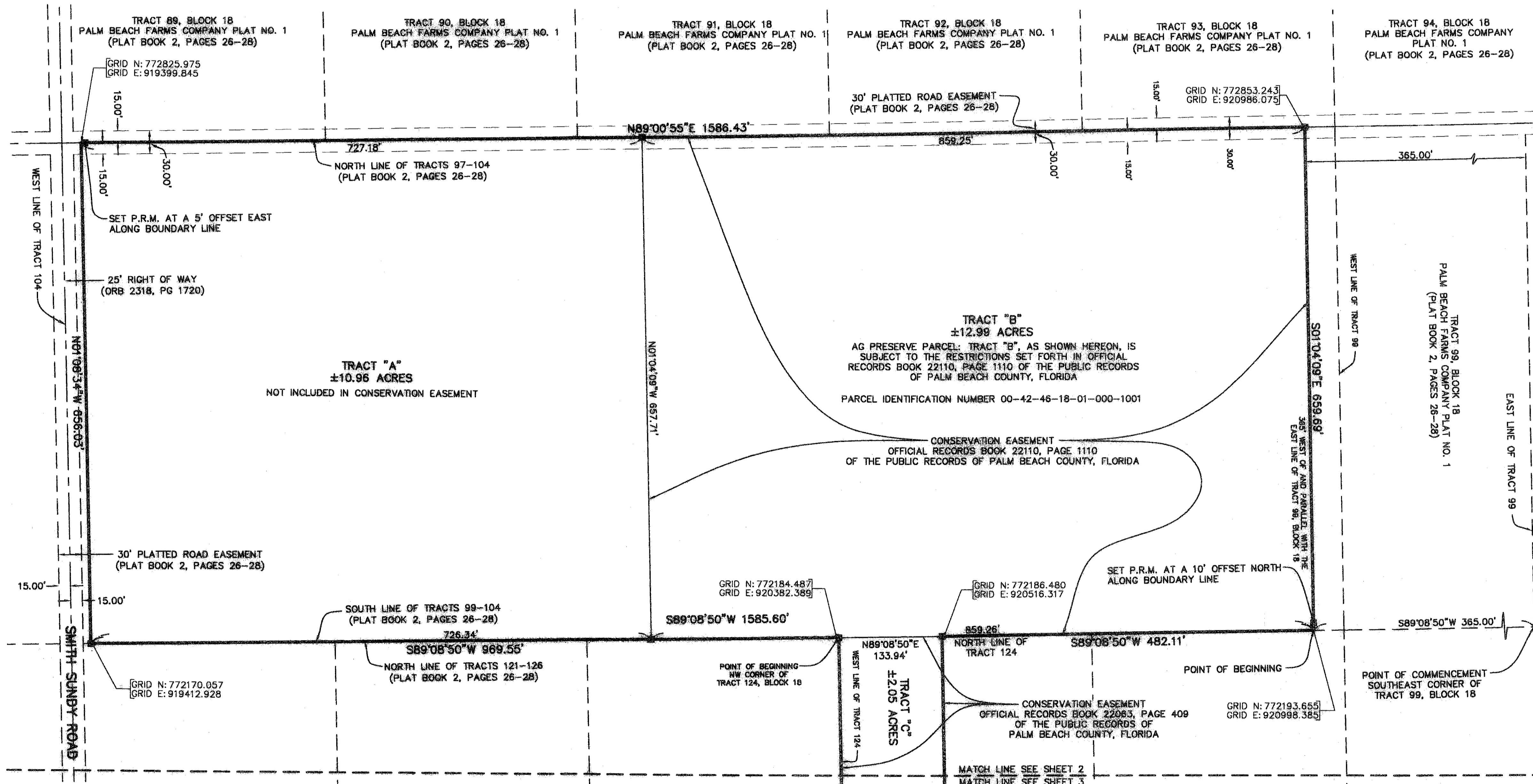


# DELRAY MARKETPLACE PRESERVE 3

BEING A REPLAT OF A PORTION OF TRACTS 100, 104 AND 124, BLOCK 18, TOGETHER WITH TRACTS 101, 102, AND 103, BLOCK 18, PALM BEACH FARMS COMPANY PLAT NO. 1, ACCORDING TO THE PLAT THEREOF AS RECORDED IN PLAT BOOK 2, PAGES 26 THROUGH 28, OF THE PUBLIC RECORDS OF PALM BEACH COUNTY, FLORIDA SITUATED IN SECTION 18, TOWNSHIP 46 SOUTH, RANGE 42 EAST, PALM BEACH COUNTY, FLORIDA

JANUARY, 2008 SHEET 2 OF 3  
CONTROL NO. 2004-616 (DELRAY MARKETPLACE)

STATE OF FLORIDA  
COUNTY OF PALM BEACH  
THIS PLAT WAS FILED FOR  
RECORD AT \_\_\_\_\_ M.  
THIS \_\_\_\_\_ DAY OF \_\_\_\_\_  
A.D. 2008 AND DULY RECORDED  
IN PLAT BOOK \_\_\_\_\_ ON  
PAGES \_\_\_\_\_ THROUGH \_\_\_\_\_  
SHARON R. BOCK  
CLERK AND COMPTROLLER  
BY: \_\_\_\_\_  
DEPUTY CLERK



**LEGEND:**

FP&L	=	FLORIDA POWER AND LIGHT
LB	=	LICENSE BUSINESS
LS	=	LICENSE SURVEY
LWDD	=	LAKE WORTH DRAINAGE DISTRICT
NO.	=	NUMBER
ORB	=	OFFICIAL RECORDS BOOK
PB	=	PLAT BOOK
PC	=	PAGE
PCS	=	PAGES
POB	=	POINT OF BEGINNING
PRM	=	PERMANENT REFERENCE MONUMENT
R/W	=	RIGHT-OF-WAY

**W** **Wantman Group, Inc.**  
Engineering ♦ Surveying ♦ Mapping  
2035 VISTA PARKWAY, SUITE 100  
WEST PALM BEACH, FL 33411  
(561) 687-2220 phone (561) 687-1110 fax  
CERT No. 6091 - LB No. 7055  
THIS INSTRUMENT WAS PREPARED BY MARTIN J. SHATTO, P.S.M.  
PROFESSIONAL SURVEYOR AND MAPPER, REGISTRATION NO. 5219  
IN THE OFFICES OF WANTMAN GROUP, INC.